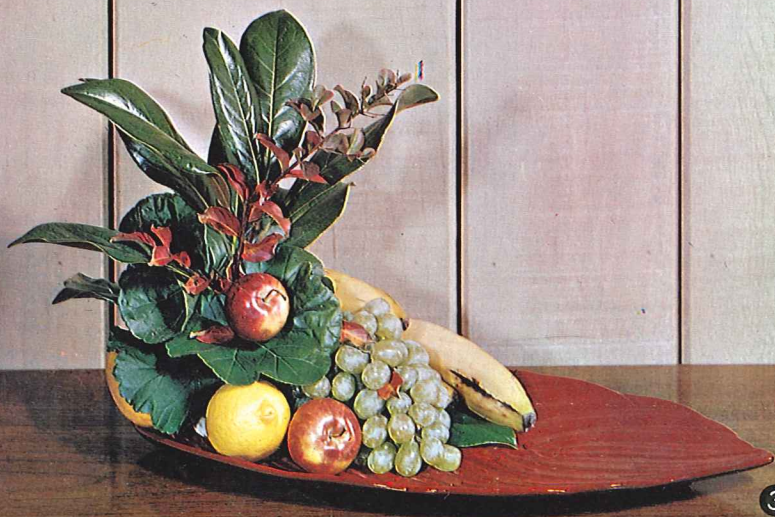




1



2



3



4

FRANKOMA POTTERY *for* 1965



No. F88 in Prairie Green



No. 91 in Peach Glow



No. 237 in Woodland Moss

FLORAL DESIGNER'S CONTAINERS

Join the many who have discovered the fascination of FRANKOMA'S EARTHEN GLAZES, on beautiful shapes — created to compliment your finest flowers.

"Our designers are enjoying using your pottery, and I am enjoying seeing the lovely arrangements going out in FRANKOMA."

*Ed Ludwig Flowers
Pittsburgh, Pa.*

*Jim Ludwig, Board of Directors
F.T.D. International*

FRANKOMA'S UNIQUE EIGHT COLORS



No. C2 in Peach Glow



No. C3 in Desert Gold



No. C4 in White Sand



No. C6 in Onyx Black



No. C5 in Brown Satin



No. C1 in Flame



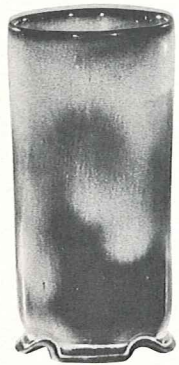
No. C7 in Woodland Moss



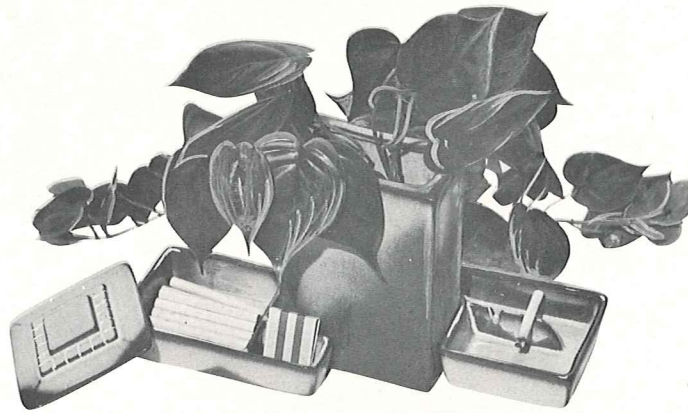
No. C8 in Prairie Green

MUGS — for coffee, tea, milk, chocolate, soup, soda pop, or — you name it. Each an original by Frankoma. Each available in any of the above colors. (Sets of four of one kind in a gift box if requested.) 8 to 10 oz., any mug in flame **\$1.50** each; any mug in any other color, **\$1.00** each.

For any piece marked available in Flame, add 50%. They are made with a matt brown lining.



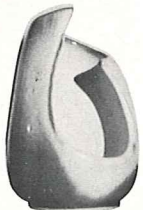
73-9" FOOTED CYLINDER-2.50



63S-"MR. AND MRS. SET"-6.00 BOXED
KING SIZE CIGARETTE BOX WITH LID
SAFETY ASHTRAY 7" PILLOW VASE



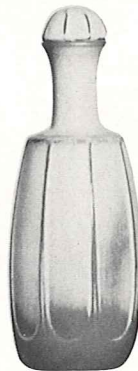
F55-17" WINE BOTTLE-3.50



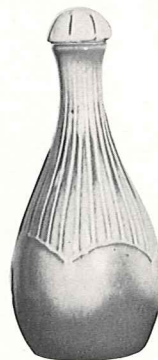
302-CANDLE VASE-1.50



237-9" POD VASE-2.50



836T

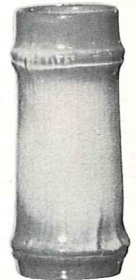


837T

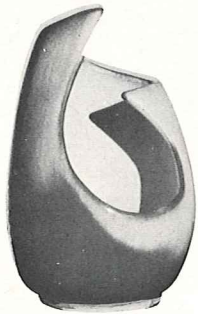
9" BOTTLE VASES-WITH LID-2.00



7H



T2-6 1/2" BAMBOO VASE-1.00



21-8" FREE FORM VASE-2.00



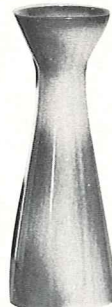
31-6" BUD VASE-.75



32-4" BUD VASE-.75



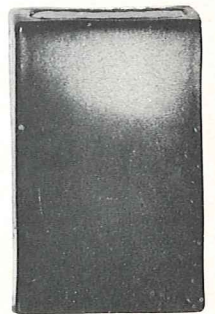
20-6" BUD VASE-1.00



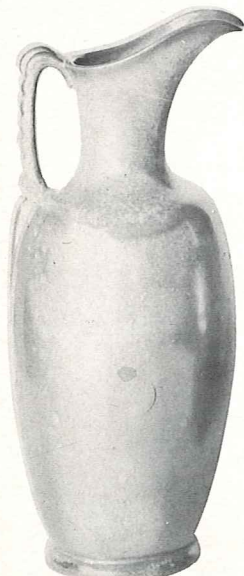
28-6 1/2" BUD VASE-1.00



43-8" BUD VASE-1.00



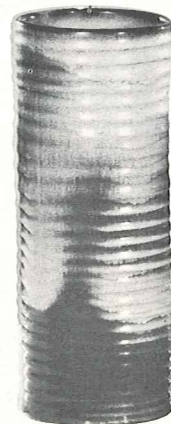
63-7" PILLOW VASE-2.00



77A-17" FIRESIDE PITCHER-10.00



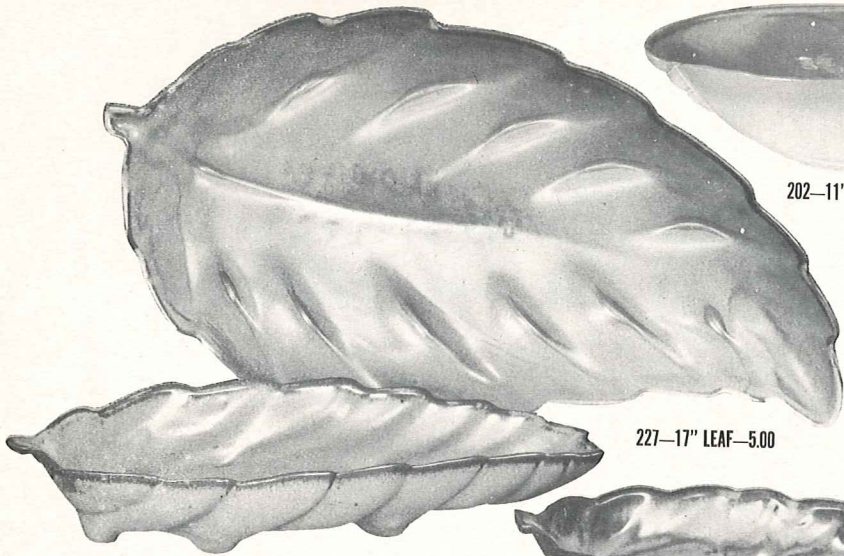
77-17" FIRESIDE VASE-10.00



72-10" RINGED CYLINDER-2.50



70-8 1/2" RINGED JARDINIERE-5.00

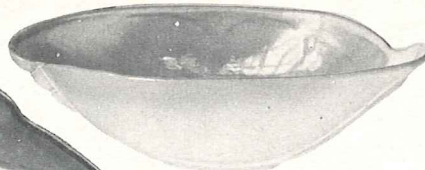


226-11" LEAF-2.00

227-17" LEAF-5.00

LEAF BOWLS

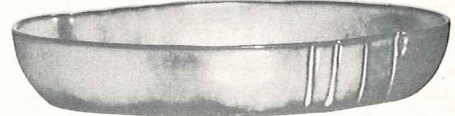
225-7" LEAF-1.00



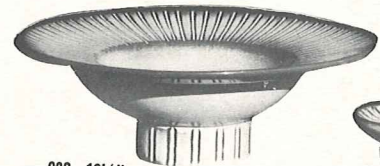
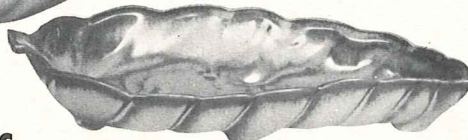
202-11" BOWL-2.00



201-9" BOWL-2.00



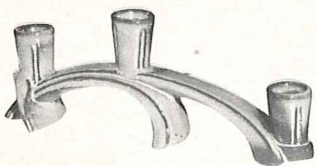
205-10" BOWL-2.00



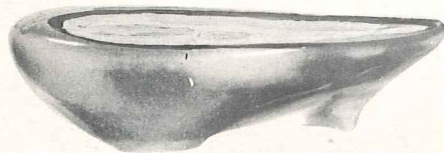
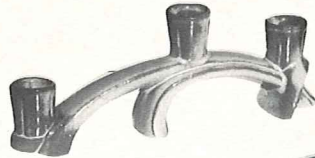
236-10 1/2" PEDESTALLED BOWL-3.50



301-CANDLE HOLDER-2.00 PR.



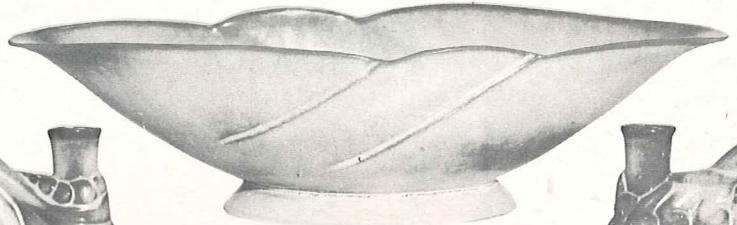
306-TRIPLE CANDLE HOLDER-3.00 PR.



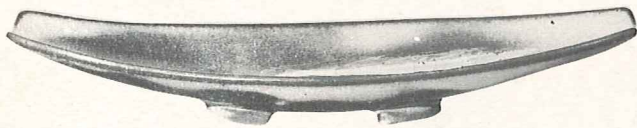
231-11" BOWL-2.50



304-DOUBLE CANDLE HOLDER-2.00 PR.



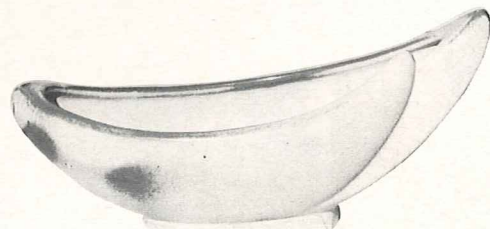
219-CENTERPIECE BOWL-5.00



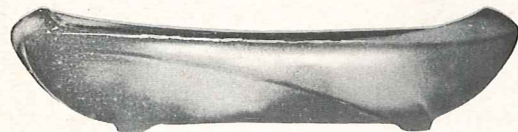
F88-15" SHALLOW BOWL-3.50



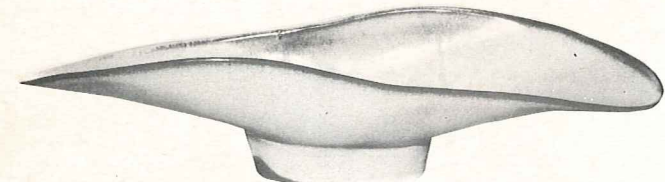
305-SINGLE CANDLE HOLDER-2.00 PR.



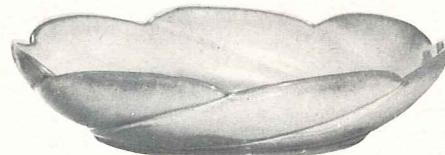
211-12" CRESCENT BOWL-2.50



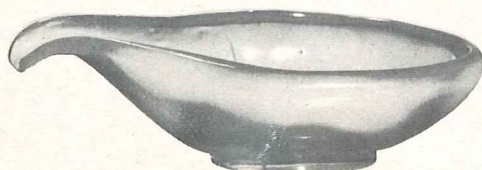
45-12" OBLONG PLANTER-2.00



F91-17" FREE FORM BOWL-5.00



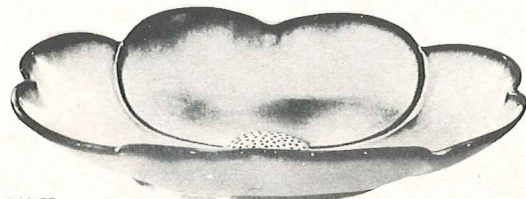
218-12" SCALLOPED BOWL-3.00



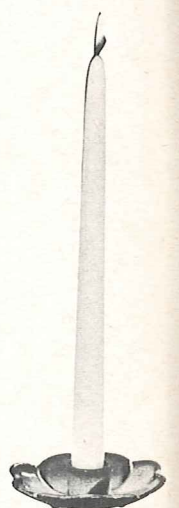
214-12" BOWL-2.50



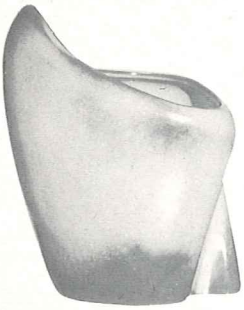
300-DOGWOOD CANDLE HOLDER-2.00 PR.



200-12" DOGWOOD FLOWER BOWL-4.00



Appropriate Containers For Beautiful Flower Arrangements



6-7" FREE FORM VASE—1.00



35-6" FOOTED BOWL—1.00



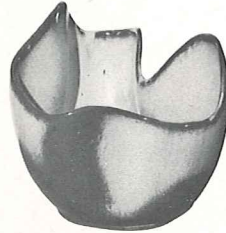
190-6" WALL VASE—1.00



54-FAN SHELL VASE—1.50



F34-8" RICE BOWL—2.00



F29-6" DRAPERY VASE—1.50



F35-7" PEDESTALLED VASE—2.00



57S-6" CORNUCOPIA—1.00



59-6 1/2" CANTEEN—2.00



F33-7" FLUTED PLANTER—2.00



F52-7" PEDESTALLED URN—2.50



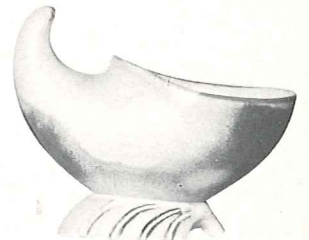
OLD FASHIONED PITCHER SET
F30A-5 1/2" PITCHER—1.50
F30B-7" BOWL—1.50



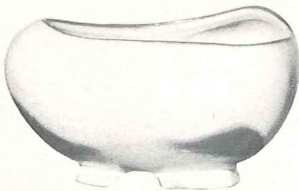
40A—SMALL PITCHER—1.00
40B—BOWL—1.00



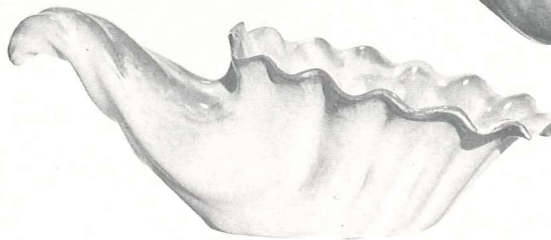
7-7" VASE—1.50



57-7" CORNUCOPIA—1.50



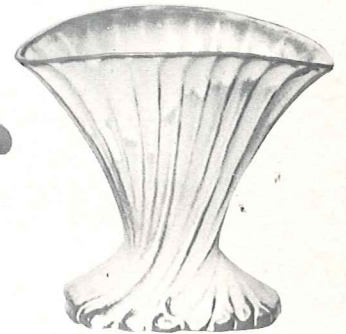
234-FOOTED FREE FORM BOWL—2.00



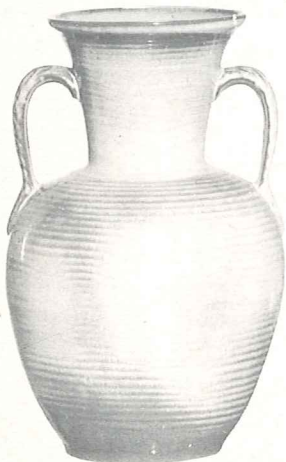
215-15" CORNUCOPIA—7.00



222-12" CORNUCOPIA—3.00



19-7" FAN VASE—2.00



71-10" LEAF HANDLED VASE—3.50



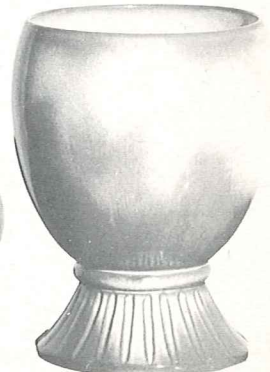
55-5" ROUND JAR—1.50



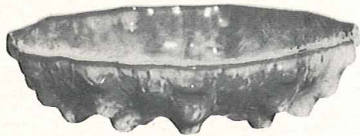
22S-5" FOOTED ROUND VASE—1.00



22-7" FOOTED ROUND VASE—2.00



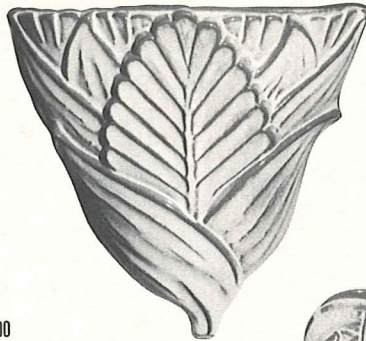
52-8" URN—3.00



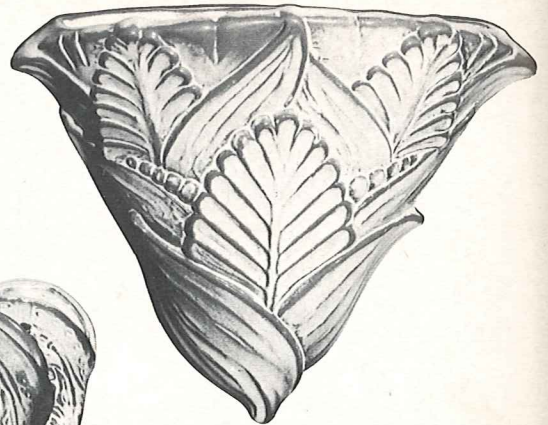
203-10" CACTUS BOWL-2.00



B3-4" CORK BARK PLANTER-1.00



197-8 1/2" WALL VASE-2.50



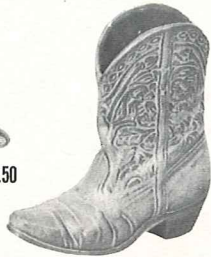
196-12" WALL VASE-5.00



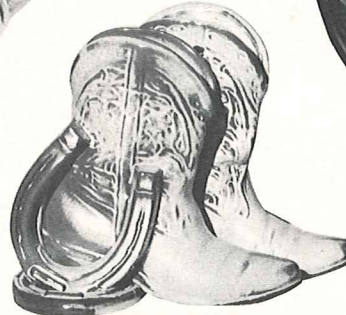
T7-4" COCONUT PLANTER-1.00



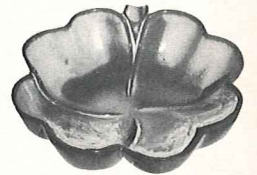
507S-BOOTS ON THONG-1.50



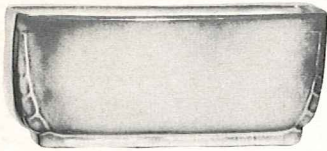
133-6 1/2" BOOT-1.50
134-4" BOOT-1.00



433-PLANTER BOOT BOOKENDS-5.00 PR.



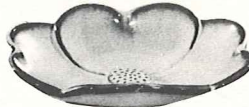
223-6" FOUR LEAF CLOVER-1.00



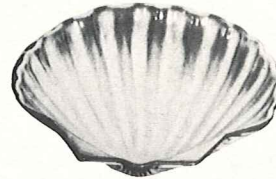
14-8" PLANTER-1.50



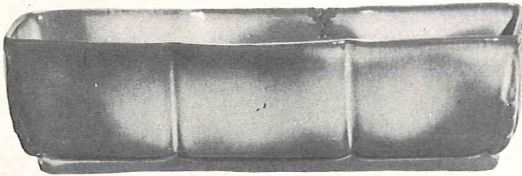
167-HORSE SHOE-.75



204-6" DOGWOOD TRAY-1.00



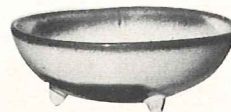
473-6 1/2" SHELL TRAY-1.00



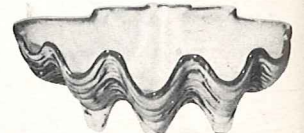
15-12" PLANTER-2.50



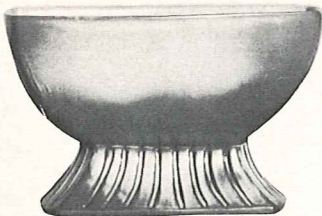
224-8" ROUND BOWL-2.00



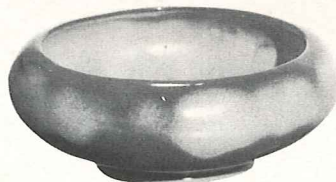
826-6" BOWL-1.00



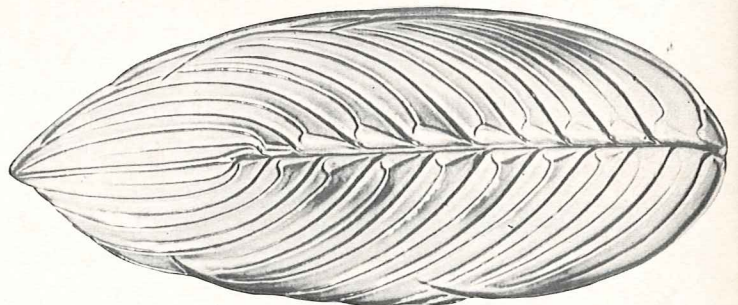
T9-7" SHELL BOWL-1.50



17-8"x3" PLANTER-2.00



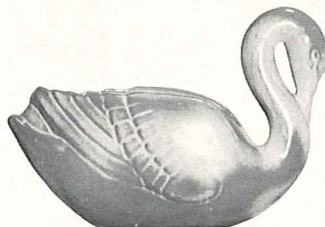
212-8" ROUND BOWL-1.50



T11-17" PALM LEAF TRAY-5.00



A8-8 1/2" JARDINIERE FOR 6 1/2" POT-2.00



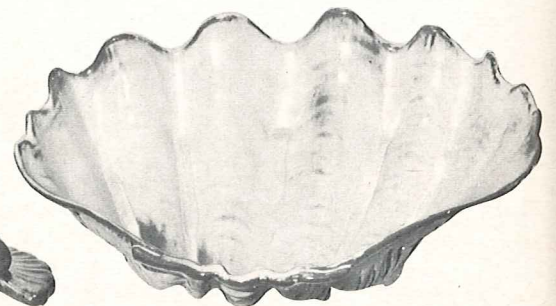
228-7 1/2" SWAN-2.00



208-11" MALLARD PLANTER-3.50



113-13" FAN DANCER-5.00



T10-13 1/2" CLAW SHELL BOWL-5.00



820-15" CHOP PLATE-7.00



7TR-6" CHEROKEE ALPHABET-1.00



94TRC-6" CATTLE BRAND-1.00



94TRH-6" HORSE SHOE-1.00



8B-SUGAR



8A-CREAMER



8B-CIGARETTE



8T-TOOTH PICK



8C-CUP



94TR-6" ROOSTER-1.00
FELTED TRIVETS



1A-CREAMER



1B-SUGAR



1B-CIGARETTE



1T-TOOTH PICK



1C-CUP

MINIATURES-.75 EACH



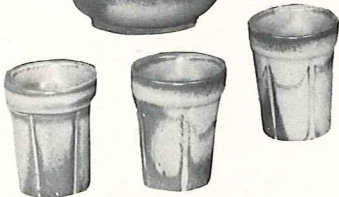
504-SUGAR



553-CREAMER



93-PITCHER WITH LID-2.50



93S-6 PIECE JUICE SET-BOXED-5.00



25T-TEA-2.50

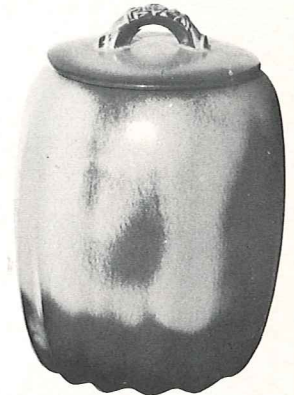


25C-COFFEE-3.50

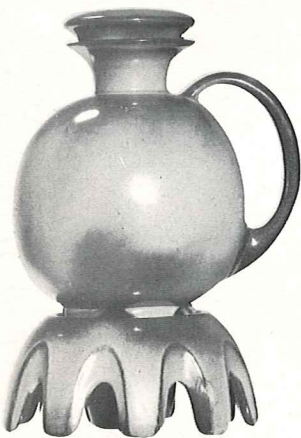


25S-SUGAR-4.00

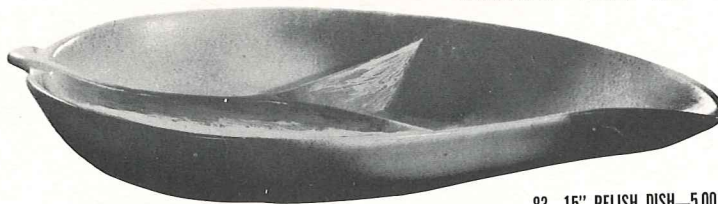
CANNISTER SET-4 PIECES-14.00



25F-FLOUR-4.50
25K-COOKIE-4.50



82S-COFFEE CARAFE COMPLETE-6.00
82-CARAFE AND LID ONLY-4.00



83-15" RELISH DISH-5.00



803-HONEY JAR W/LID-1.50



838-10 OZ. PITCHER-1.00



833-24 OZ.-1.50



8-24 OZ.-1.50



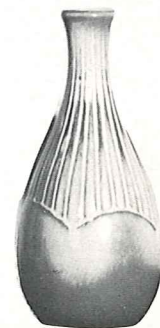
835-24 OZ.-1.50



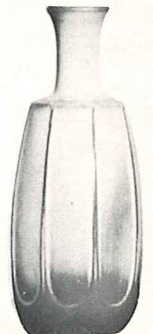
29-24 OZ. BOTTLE-1.50



831-16 OZ.-1.50



837-24 OZ. BOTTLE-1.50



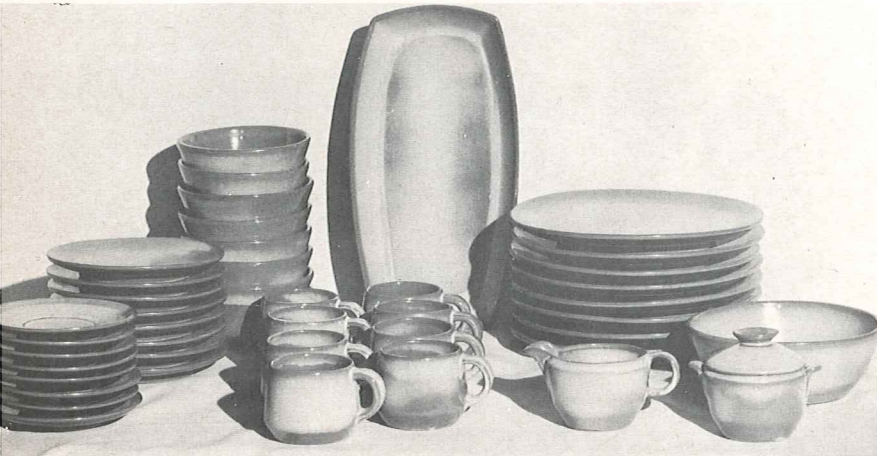
836-24 OZ. BOTTLE-1.50

JUGS FOR HONEY-SYRUP-SALAD DRESSING, ETC.-

Westwind

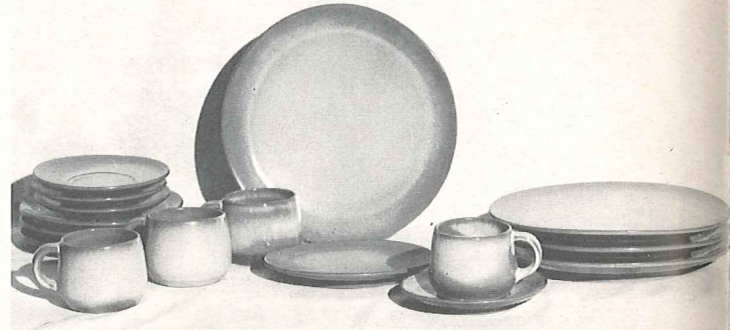
PATTERN

AVAILABLE ONLY IN: Peach Glow, Woodland Moss, Prairie Green and White Sand.



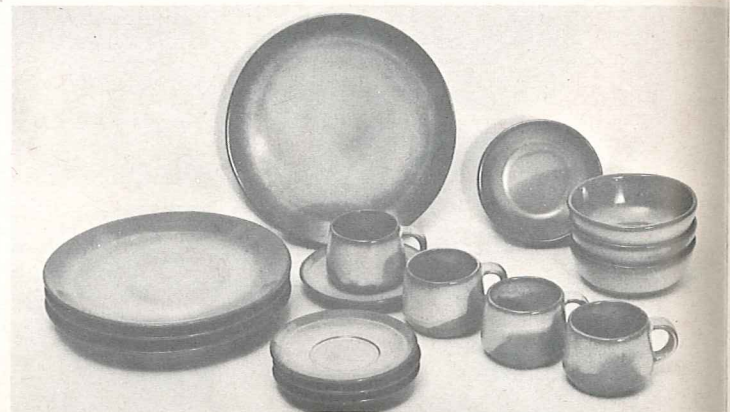
6LS-45 PC. SERVICE SET, BOXED-\$46.00

- 8-Cups
- 8-Saucers
- 8-14 Oz. Bowls
- 8-7" Plates
- 8-10" Plates
- 1-13" Platter
- 1-Creamer
- 1-Sugar
- 1-Sugar Lid
- 1-Serving Bowl



6SS-16 PC. STARTER SET, BOXED-\$16.00

- 4-Cups
- 4-Saucers
- 4-7" B & B Plates
- 4-10" Plates



6SX-16 PC. STARTER SET, BOXED-\$16.00

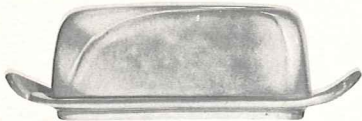
- 4-Cups
- 4-Saucers
- 4-14 Oz. Chili-Soup Bowls
- 4-10" Plates

SIMPLICITY in its truest form — that's "Westwind." The carefully broken line of the shallow coupe shape is the key to the pattern. The simple unbroken line of the cup handle, with its broad thumb rest, combines grace and security.

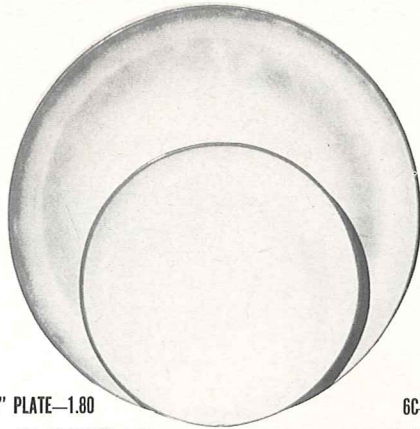
The large and small open bakers have rolled rims for safety and ease of handling. Cleaning is no task. Much care is exercised in making these "easy-grip" knobs on the lids. This oven-to-table pottery is truly the gourmet's delight.

The homemaker today appreciates the warm, cordial earthen colors in this unique pottery. Its waxy textures are so lovely to the touch. Such tableware should be selected for its artistic qualities as well as its serviceability.

"Westwind," with its basic simple lines, permits freedom in expression of personality which is so important in smart contemporary homes. You'll LOVE "Westwind" —and, of course, it is all ovenproof.



*4K—BUTTER DISH—2.00



6F—10" PLATE—1.80

6G—PLATE 7"—1.00



6B—SUGAR WITH LID—1.50



6A—9 OZ CREAMER—1.00

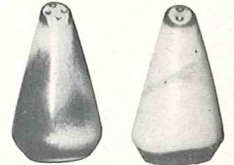


*6VT—2½ QT. TUREEN—4.00



6C—CUP—.90

6E—5" WELLED SAUCER—.75



*6H—SALT & PEPPER—1.50



*6V—2½ QT. BAKER—4.00



*5LC—6 OZ. JUICE—.75



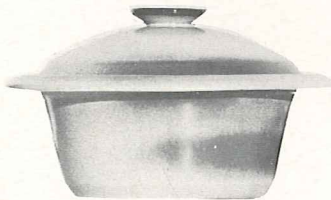
*5L—12 OZ. TUMBLER—.90



*6CL—DOUBLE COFFEE—1.00



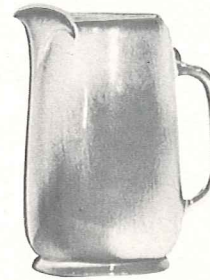
*80—2 QT. PITCHER—2.50



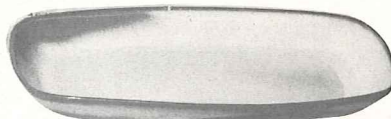
*6VS—1½ QT. BAKER—3.00



*6T—6 CUP TEA POT—2.50



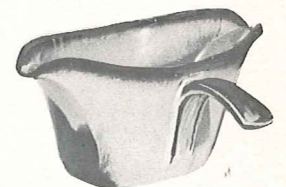
*81—1 QT. PITCHER—2.00



*5QS—13" STEAK PLATE (SHALLOW PLATTER)—2.00



*6J—2 CUP TEAPOT—2.00



*6S—TWO SPOUT GRAVY—2.00



*6U—18 OZ. BAKER-FOR-TWO—2.00
A COVERED CANDY DISH

*6P—11" STEAK PLATE—1.80

*5PS—9" TRAY—1.50

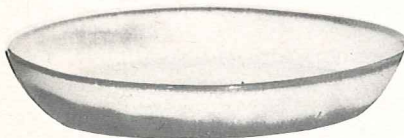


*6P—6 OZ. BEAN POT—.75

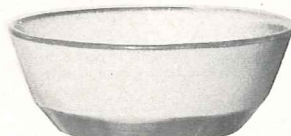


6X—14 OZ. CHILI SOUP—1.00

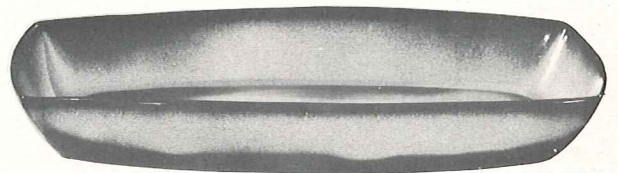
6XS—10 OZ. FRUIT—.80



*91—10" BAKING DISH—2.00

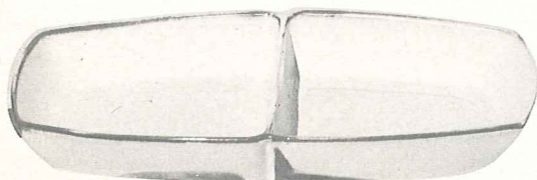


*6N—1 QT. BOWL—1.50

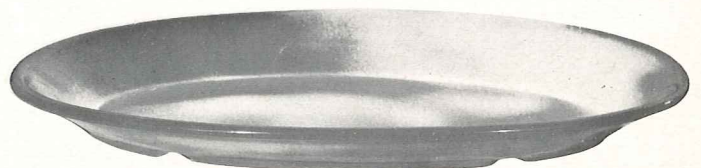


*5P—17" DEEP PLATTER—5.00

*5Q—13" DEEP PLATTER—2.50



5QD—13" DIVIDED BOWL—2.50



*TP—17" OVAL PLATTER—5.00

MAYAN-AZTEC Pattern

AVAILABLE ONLY IN: Desert Gold, Prairie Green, White Sand and Woodland Moss.



7LS—45 PC. SERVICE SET, BOXED—\$46.00

- 8—Cups
- 8—Saucers
- 8—14 Oz. Bowls
- 8—7" B & B Plates
- 8—10" Plates
- 1—13" Platter
- 1—Creamer
- 1—Sugar
- 1—Sugar Lid
- 1—Serving Bowl



7SS—16 PC. STARTER SET, BOXED—\$16.00

- 4—Cups
- 4—Saucers
- 4—7" B & B Plates
- 4—10" Plates



7SX—16 PC. STARTER SET, BOXED—\$16.00

- 4—Cups
- 4—Saucers
- 4—14 Oz. Chili-Soup Bowls
- 4—10" Plates

1,000 YEARS before Columbus "discovered" America, there flourished a civilization in this country whose artistic, social, and religious standards far surpassed any European peoples up to that time. Many archeologists not only compare the art and architecture of the Mayans and Aztecs favorably with that of ancient Egypt, but in many respects prefer their achievements in art importance. THESE were the FIRST Americans.

It is well established that the nucleus of American Indian tribes spread from the Great Southwest region. Our particular interest is in those who went South—the Mayans and Aztecs. They have given to the world some of its richest art treasures. The "golden age" of Mayan Art, in which they developed their pantheon, built their temples, perfected their Arts, social structure and government, occupied the first few centuries after Christ.

The Great Temple in Copan, Yucatan, built to the War Diety, was completed just before the Spanish invasion. The temple compound covered almost a quarter square mile, comprising seventy-eight buildings — a most stupendous achievement and a monument to architectural beauty.

The most widely known of the Mayan and Aztec arts are the numerous hieroglyphs. They were used profusely on buildings, altars, monuments, and other such places, not only for embellishments, but for the recording of information. The decorations on the stairway of Copan alone were composed of over 2,500 different glyphs. Freehand methods prevailed entirely, for their art was their only written language.

Pottery has always evidenced every strata of culture. Fragments of pottery have been found where all other records have been destroyed, even in prehistoric times. Throughout the long history of all Indian tribes, pottery has been the universal art. The pottery of the ancient Southwestern Indians challenges comparison in color, form, and mastery of line with that of the Greek and Orientals.

It is through the inspiration of this wealth of beauty that FRANKOMA has created its Mayan-Aztec tableware.



7V-2 QT. BAKER-3.00



7W-3 QT. BAKER-4.00



7U-10 OZ. BAKER-1.50



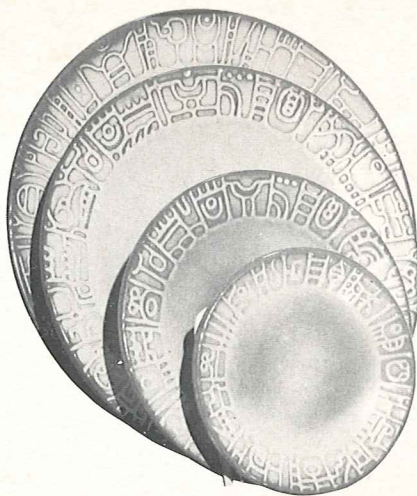
7HS-SALT & PEPPER-1.50



7PS-9" TRAY-1.50



7T-6 CUP TEA POT-2.50



7FL-10" PLATE-1.80

7F-9" PLATE-1.50

7G-7" PLATE-1.00

7E-5" SAUCER-.75



7B-SUGAR WITH LID-1.50



7A-6 OZ. CREAMER-1.00



7C-CUP-.90



7CL-8 OZ. MUG-1.00



7M-14 OZ. MUG-1.50



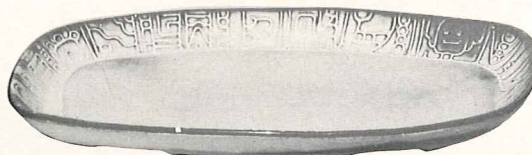
7XO-8 OZ. FRUIT-.80



7X-14 OZ. CHILI-SOUP-1.00



7XL-20 OZ. SALAD-1.25



7QS-13" STEAK PLATTER (SHALLOW PLATTER)-2.00



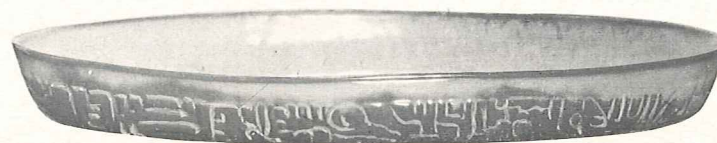
7Q-13" DEEP PLATTER-2.50



*7FC-15" CHOP PLATE-7.00



7N-1 QT. VEGETABLE BOWL-1.50



7P-17" DEEP PLATTER-5.00



7I-2 CUP TEAPOT-2.00

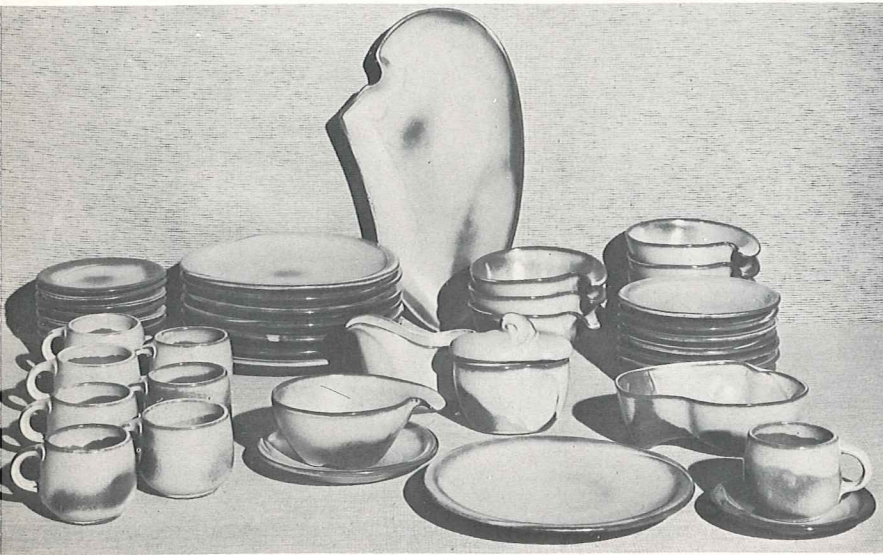
THIS PAGE AVAILABLE IN PRAIRIE GREEN, DESERT GOLD, WHITE SAND AND WOODLAND MOSS, EXCEPT WHERE NOTED*

*AVAILABLE IN ALL COLORS-ADD 50% FOR FLAME-SEE PAGE 2

SIZES ARE APPROXIMATE AND MAY VARY SLIGHTLY.

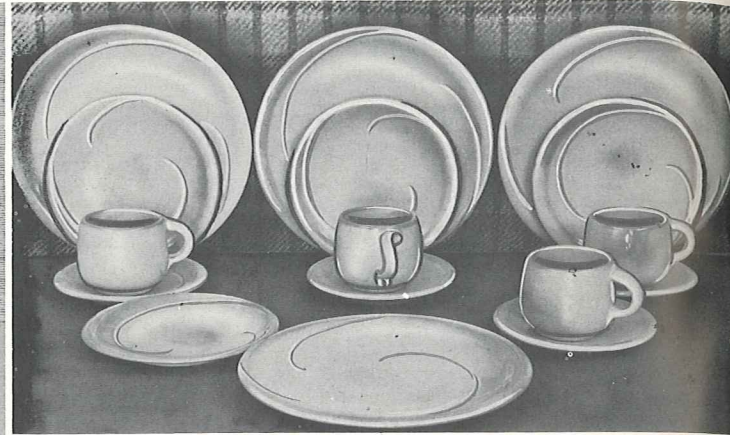
LAZYBONES Pattern

AVAILABLE ONLY IN: Brown Satin, Desert Gold and Prairie Green.



4LS-45 PC. SERVICE SET, BOXED-\$46.00

- 8-Cups
- 8-Saucers
- 8-14 Oz. Bowls
- 8-7" Plates
- 8-10" Plates
- 1-13" Platter
- 1-Creamer
- 1-Sugar
- 1-Sugar Lid
- 1-Serving Bowl



4SS-16 PC. STARTER SET, BOXED-\$16.00

- 4-Cups
- 4-Saucers
- 4-7" B & B Plates
- 4-10" Plates



4SX-16 PC. STARTER SET, BOXED-\$16.00

- 4-Cups
- 4-Saucers
- 4-14 Oz. Chili-Soup Bowls
- 4-10" Plates

Our American homes are being designed and built so that home makers can take advantage of the many modern conveniences, yet develop their own personalities in color and styling.

The furnishings for these contemporary homes are practical and simplified. They must be selected carefully to preserve a cordial atmosphere, which we all wish for our family and friends.

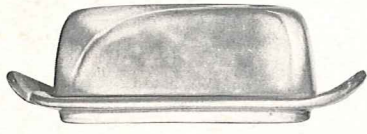
Frankoma was sensitive to these trends when this new dinnerware was being designed. The atmosphere surrounding LAZYBONES is relaxing, for you are influenced by its free flowing sculptured lines. As you accept the invitation to handle and caress each piece, you will love the way

they fit the contour of your hands, for immediately they become a part of you.

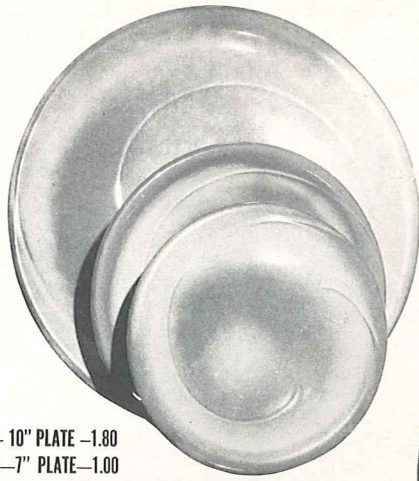
Food cooked in Lazybones can go from the oven to the table—and there are so many uses for each piece. They are designed to serve!

Notice the array of Frankoma's colors. They are the gourmet's delight, for they all compliment your food and share in making every meal an occasion. The shapes themselves are both practical and beautiful.

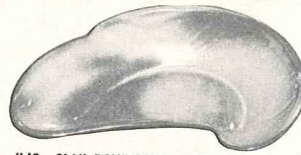
When you set your table with Lazybones, you are set to relax, and enjoy your share of casual living. It will be the "Talk of the Table" with your family and friends.



*4K—BUTTER DISH—2.00



4F—10" PLATE—1.80
4G—7" PLATE—1.00
4E—5" SAUCER—.75



*4S—6½" BONE DISH—1.00



4X—16 OZ. CEREAL—1.00



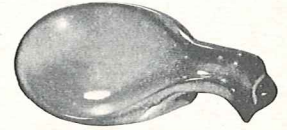
*5L—12 OZ. TUMBLER—.90



*5LC—6 OZ. JUICE—.75



4C—CUP—.90



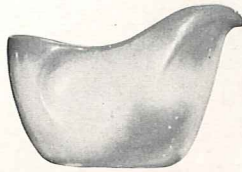
*4Y—6" SPOON HOLDER—1.00



*4H—SALT & PEPPER—1.50



*4V—2 QT. BAKER—3.00



4A—8 OZ. CREAMER—1.00



4B—SUGAR WITH LID—1.50



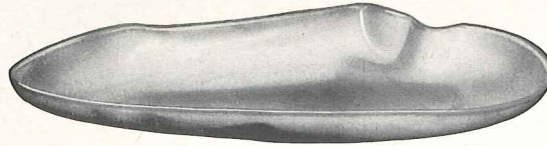
*4M—18 OZ. MUG—1.50



4Z—6" SOUP—1.00



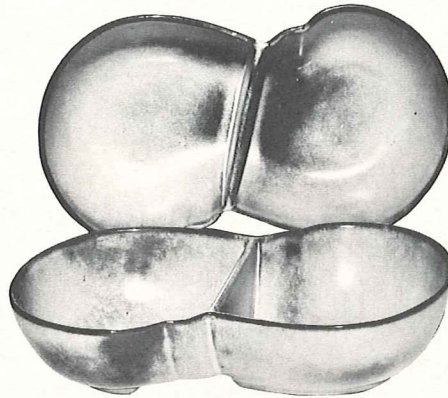
*4N—24 OZ. VEGETABLE—1.50



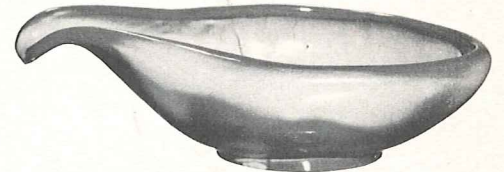
*4P—13" PLATTER—2.50



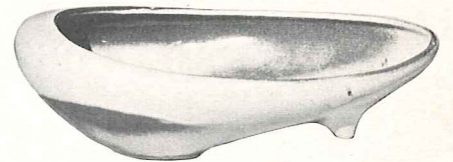
*4W—3 QT. BAKER—4.00



*4QD—11" DIVIDED BOWL—2.50



*214—12" SERVICE BOWL—2.50



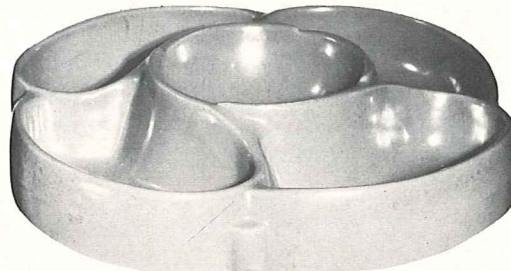
*231—11" SERVICE BOWL—2.50



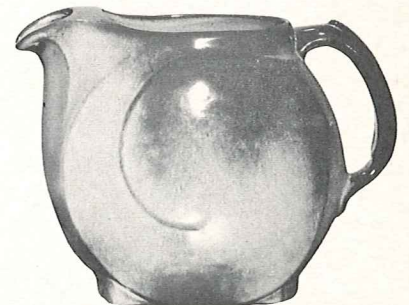
*BP—6 OZ. BEAN POT—.75



*4XL—24 OZ. SALAD OR GUMBO—1.25



*818—5 SECTION LAZY SUZETTE ON BALL BEARING BASE—12"—7.00



*4D—2 QUART PITCHER—3.00

THIS PAGE AVAILABLE IN PRAIRIE GREEN, DESERT GOLD AND BROWN SATIN, EXCEPT WHERE NOTED*

*AVAILABLE IN ALL COLORS—ADD 50% FOR FLAME—SEE PAGE 2

SIZES ARE APPROXIMATE AND MAY VARY SLIGHTLY.

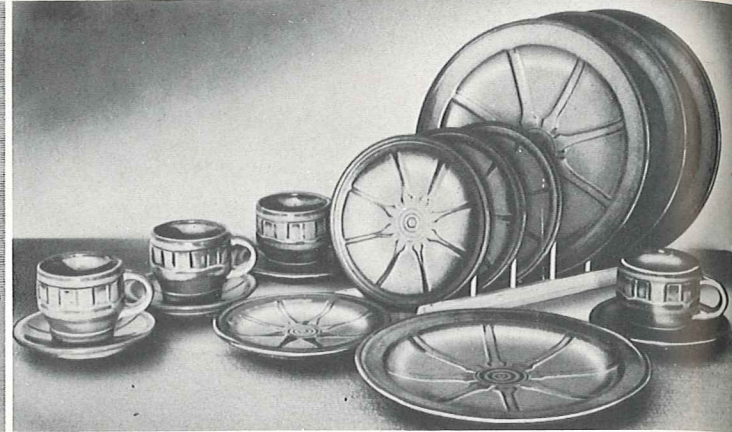
WAGON WHEELS Pattern

AVAILABLE ONLY IN: Desert Gold and Prairie Green.



94LS-45 PC. SERVICE SET, BOXED-\$46.00

- 8-Cups
- 8-Saucers
- 8-14 Oz. Bowls
- 8-7" Plates
- 8-10" Plates
- 1-13" Platter
- 1-Creamer
- 1-Sugar
- 1-Sugar Lid
- 1-Serving Bowl



94SS-16 PC. STARTER SET, BOXED-\$16.00

- 4-Cups
- 4-Saucers
- 4-7" B & B Plates
- 4-10" Plates



94SX-16 PC. STARTER SET, BOXED-\$16.00

- 4-Cups
- 4-Saucers
- 4-14 Oz. Chili-Soup Bowls
- 4-10" Plates

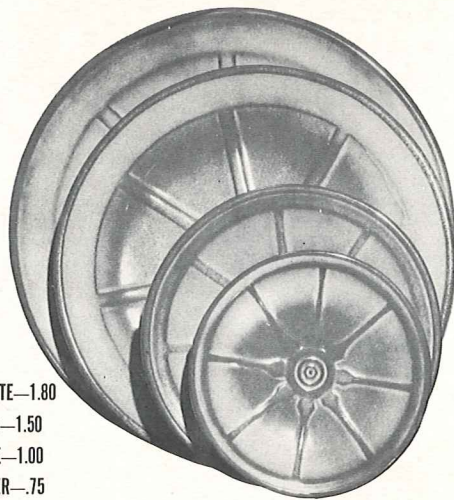
THE ROMANCE OF THE WEST lives on with our WAGON WHEEL Pottery! The pitchers are quaint and practical! The cup is the hub of a wheel, and the "good luck" horseshoe makes the handles for the baker. There are bands of cattle brands on the platters and bowls. The whole set is an application of the fine designs one can find on any ranch.

A most colorful part of the history of the Southwest is the cattle industry, and the rancher's "coat of arms" is his "cattle-brand." The covered wagon, "wagon wheels," horses, the cowboys, cattle, the "little dogies," and above all, the "cattle-brand" are symbols of this natural industry.

The cattle-brand is the symbol of the rancher, and it identifies his proudest possessions. It is the family trademark, handed down from generation to generation.

Many of these brands are fine designs, and most of them have a definite meaning. Some are the initials of the owner, others may refer to hills on the ranch, the number of acres he owns, the number in the family, his monogram, key, a hat, or any one of a thousand items of interest. Each brand is usually registered in the county in which it is used.

We are proud to take this opportunity to eulogize these pioneers of the Southwest, and include a number of these brands in decorating some of the pieces of our WAGON WHEEL set. Every piece is oven-proof.



94FL-10" PLATE-1.80
94F-9" PLATE-1.50
94G-7" PLATE-1.00
94E-5" SAUCER-.75



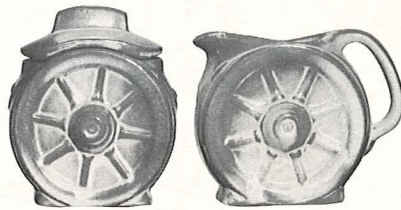
94H-SALT & PEPPER-1.50



94M-16 OZ. MUG-1.50



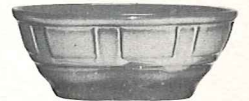
94XL-20 OZ. BOWL-1.25



94B-SUGAR WITH LID-1.50 94A-8 OZ. CREAMER-1.00



94C-5 OZ. CUP-.90



94X-14 OZ. CEREAL-1.00



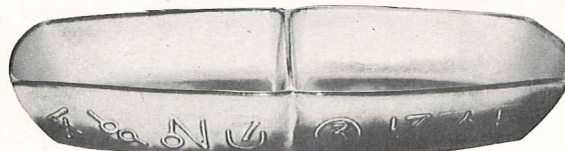
94V-2 QT. BAKER-3.00



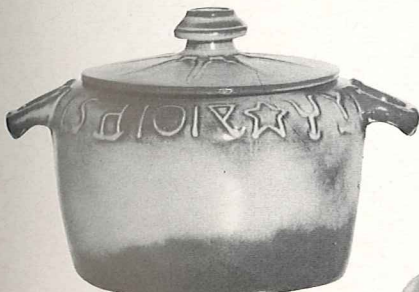
94L-12 OZ. TUMBLER-.90



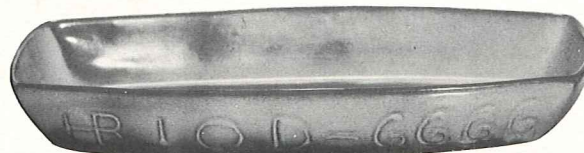
94XO-6 OZ. DESSERT-.80



94QD-13" DIVIDED BOWL-2.50



94W-3 QT. BAKER-4.00



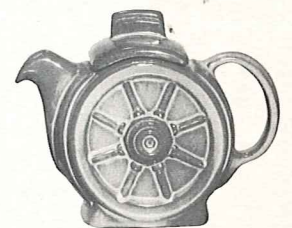
94Q-13" PLATTER-2.50



94N-1 QT. VEGETABLE BOWL-1.50



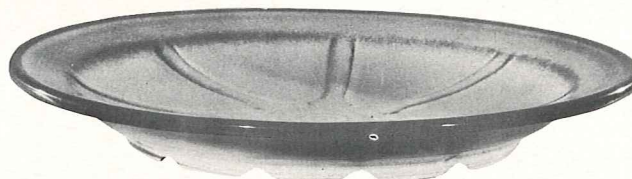
94P-17" PLATTER-5.00



94J-2 CUP TEAPOT-2.00



94D-2 QT. PITCHER-2.50



94FC-15" CHOP PLATE-7.00



94T-6 CUP TEA POT-2.50

THIS PAGE AVAILABLE IN PRAIRIE GREEN AND DESERT GOLD.
SIZES ARE APPROXIMATE AND MAY VARY SLIGHTLY.

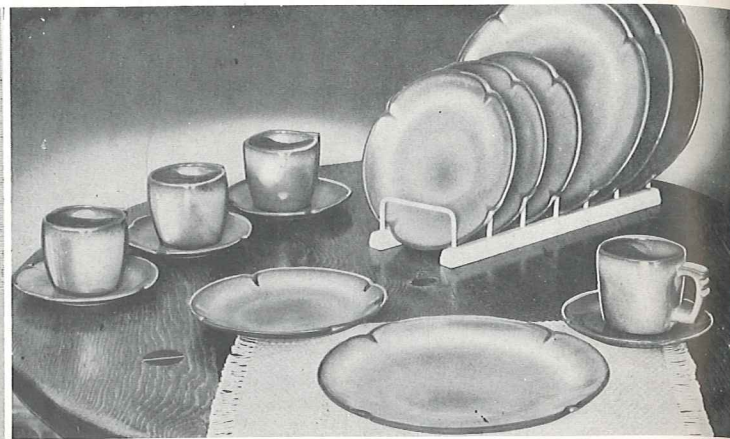
Plainsman Pattern

AVAILABLE ONLY IN: Woodland Moss, Desert Gold, Brown Satin and Prairie Green.



5LS-45 PC. SERVICE SET, BOXED-\$46.00

- 8-Cups
- 8-Saucers
- 8-14 Oz. Bowls
- 8-6½" Plates
- 8-10" Plates
- 1-13" Platter
- 1-Creamer
- 1-Sugar
- 1-Sugar Lid
- 1-Serving Bowl



5SS-16 PC. STARTER SET, BOXED-\$16.00

- 4-Cups
- 4-Saucers
- 4-6½" B & B Plates
- 4-10" Plates



5SX-16 PC. STARTER SET, BOXED-\$16.00

- 4-Cups
- 4-Saucers
- 4-14 Oz. Chili-Soup Bowls
- 4-10" Plates

For thousands of years men have gloried in creating "atmosphere" around their favorite sport — eating. Harmonious and beautiful surroundings not only add to the pleasure of eating but make it a healthier pastime. We still lavish all we possibly can on our banquets and feasts, for we love to eat.

Men have always managed to devise some sort of receptacle to hold food, either raw or prepared, and the quality and value of his utensils depend more on his love of beauty and ability to create than the size of his purse. Of the many materials used throughout the centuries, in all countries of the world — iron, copper, brass, stone, wood, silver, and even gold, ceramics has remained the favorite of all eating vessels. Since the acceptance of "whiteware" in the sixteenth century, most fine tables have been set with "dinnerware" or "china." This is sometimes a white earthenware, or a compounded china body, or even a translucent true porcelain. Its quality depends on the selec-

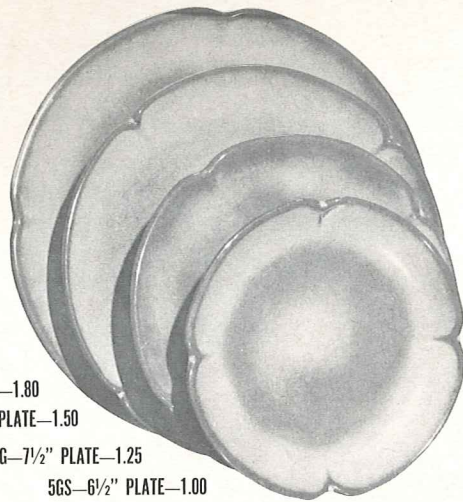
tion and handling of the materials plus its Art value expressed in line, form and color.

Today, from the crudest earthenware to the finest porcelain, we still choose CERAMICS of some kind for our table. Although we would not eliminate "whitewares," we love our modern pottery tableware. Why not? It is gay, happy, and colorful, and surely fits into our modern mode of living. It is with this in mind that we have created FRANKOMA TABLEWARE.

For one design we have gone to the Great Plains of the Southwest and offer you the "PLAINSMAN" pattern. Its well chosen, simple lines and sturdy shapes create an atmosphere benefitting its heritage. It is most appropriate "for fun or fashion." Every piece is oven-proof.



*5V-2 QT. BAKER-3.00



5F-10" PLATE-1.80

5FS-9" PLATE-1.50

5G-7 1/2" PLATE-1.25

5GS-6 1/2" PLATE-1.00



*5DC-DEMITASSE CUP-.75

*5DE-DEMITASSE SAUCER-.75



5A-12 OZ. CREAMER-1.00



*5W-3 QT. BAKER-4.00



*5CL-12 OZ. MUG-1.00

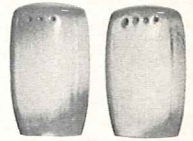


5B-SUGAR WITH LID-1.50

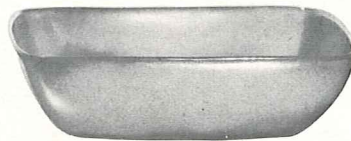


5C-CUP-.90

5E-5 1/2" SAUCER-.75



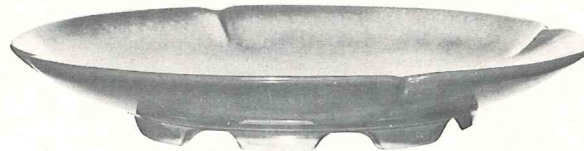
*5HS-SALT & PEPPER-1.50



*5NS-9" VEGETABLE-2.00



*5N-4 1/2 QT. BOWL-5.00



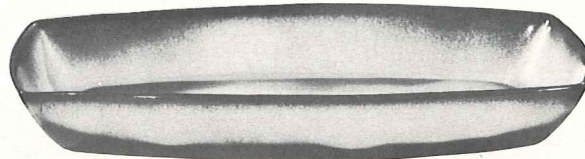
*5FC-15" CHOP PLATE-7.00



*5L-12 OZ. TUMBLER-.90



*5LC-6 OZ. JUICE-.75



*5P-17" PLATTER-5.00

*5Q-13" PLATTER-2.50



*5DB-6 OZ. SUGAR-.75



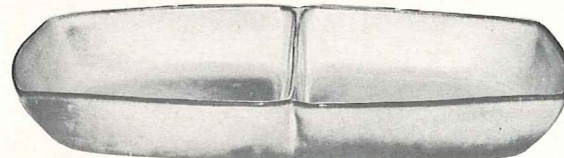
*5DA-6 OZ. CREAMER-.75



5XL-20 OZ. BOWL-1.25

5X-14 OZ. CEREAL-1.00

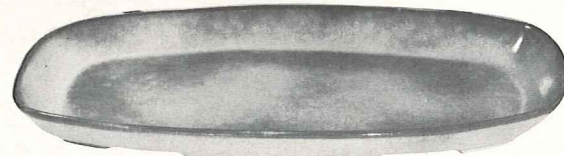
5XS-9 OZ. FRUIT-.80



50D-13" DIVIDED BOWL-2.50

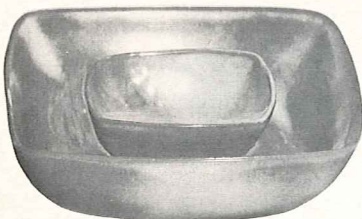


*5TL-12 CUP TEAPOT-4.00



*5QS-13" PLATTER-2.00

*5PS-9" TRAY-1.50



*5ND-9" CHEESE DIP-2.50



*5T-6 CUP TEAPOT-2.50



*5M-16 OZ. MUG-1.50



*5D-3 QT. PITCHER-3.50



*5S-20 OZ. GRAVY BOAT-1.50

THIS PAGE AVAILABLE IN BROWN SATIN, DESERT GOLD, PRAIRIE GREEN & WOODLAND MOSS, EXCEPT WHERE NOTED*.

*AVAILABLE IN ALL COLORS-ADD 50% FOR FLAME-SEE PAGE 2

SIZES ARE APPROXIMATE AND MAY VARY SLIGHTLY

ASH TRAYS AND ACCESSORIES



477



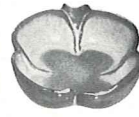
463



467



512



513



470



472

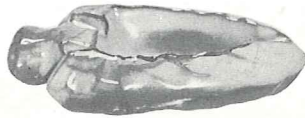
MINIATURE TRAYS 3" TO 4"—.75 EACH



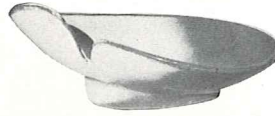
474—4" ROUND—1.00



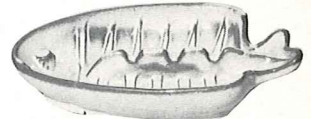
469—SAFETY ASHTRAY—.75



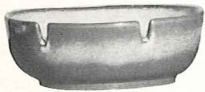
453—7" ARROW HEAD—1.00



466—7" FREE FORM—1.00



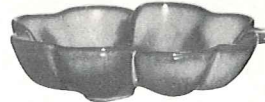
T8—7" FISH—1.00



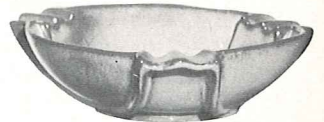
475—6" ROUND—1.50



452—7" FREE FORM—1.50



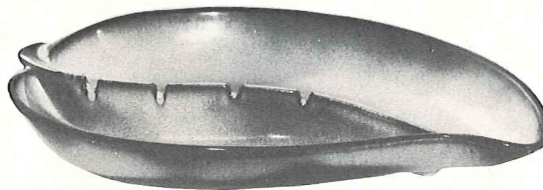
223—6" CLOVER LEAF—1.00



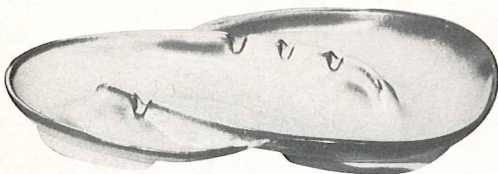
458—7" THREE SIDED—2.00



480—8" ROUND—3.00



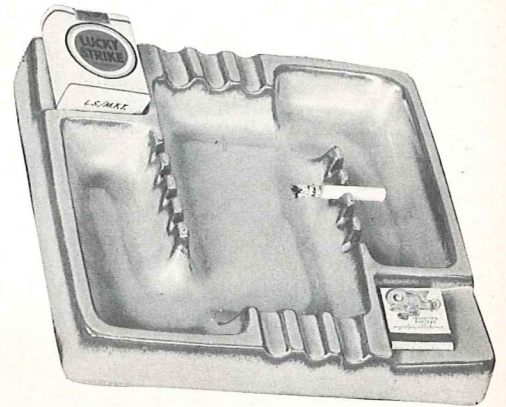
478—15" LEAF TRAY WITH SAFETY REST—5.00



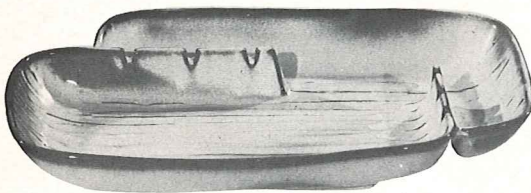
F203—13½" TEAR DROP—3.00



471—9" AZTEC—2.00



464—10½" SQUARE—5.00



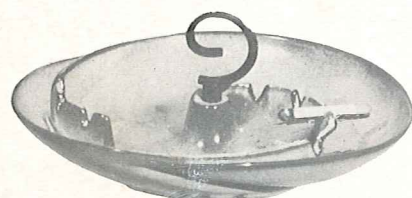
479—12" FREE FORM WITH SAFETY REST—5.00



8L—LIGHTER—3.00

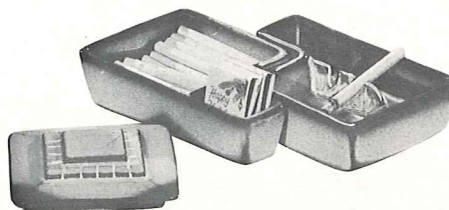


1L—LIGHTER—3.00



30—WITHOUT HANDLE—3.00

30T—10" ROUND ASH TRAY—3.50



63A—FITTED SAFETY ASHTRAY—1.50

63C—KING SIZE CIGARETTE BOX WITH LID—2.50



34M—REFRESHMENT AND ASH TRAY ON WROUGHT IRON STAND WITH MAGAZINE RACK—10.00

WESTWIND
PATTERN
in
Peach
Glow



Arrangements
in No. 21
Vase



Complete
settings
shown
on Page 9



PLAINSMAN
PATTERN
in
Woodland
Moss

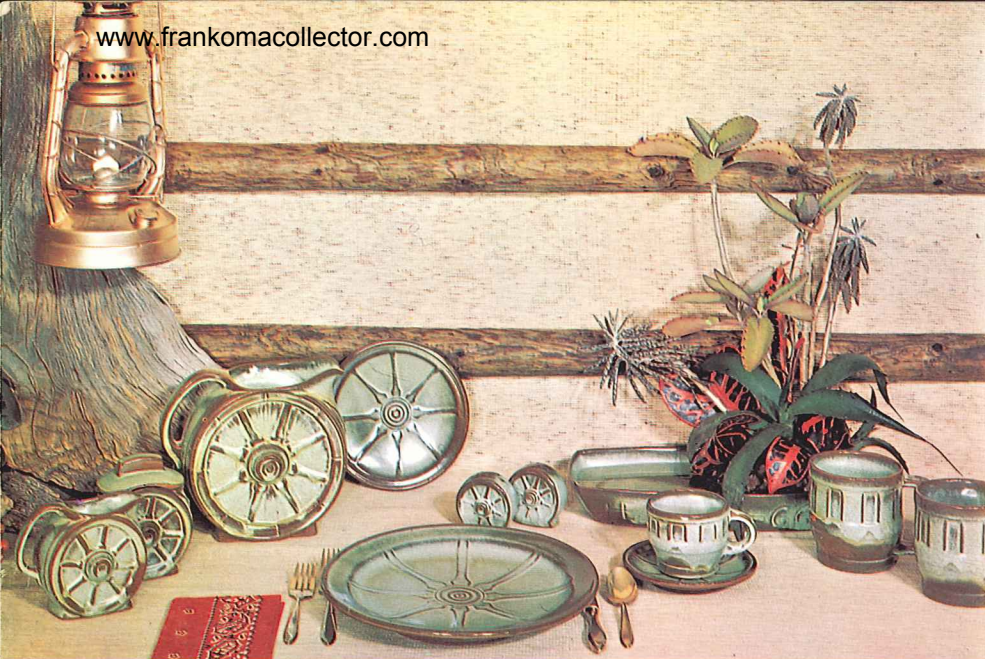


Arrangements
in No. 231
Bowl



Complete
settings
shown
on Page 17





WAGON WHEELS PATTERN, in Prairie Green, see Page 15



LAZY BONES PATTERN, in Brown Satin, see Page 13



MAYAN-AZTEC PATTERN, in Desert Gold, see Page 11

FRANKOMA is ovenproof but does not claim to be flameproof. You will find it very durable and serviceable wherever china or pottery can be used. It is designed to be entirely satisfactory and we would appreciate letting the factory know of any deviation from this standard.

You are a welcomed guest at the factory any time. Should you come during working hours, we will be glad to conduct you through the plant to see FRANKOMA made. Prices subject to change without notice. Prices shown are retail. Prices may be slightly higher far East and far West.

FRANKOMA POTTERY

Mrs. Frank D. LeSueur
FRANKOMA POTTERY SHOPPE
206 Columbian Avenue 274-3841
Columbus, Ohio 43223

FRONT COVER

1. Mrs. John Frank with vase No. 72; color, Woodland Moss.
2. F35 vase; color, Brown Satin.
3. T11 Palm leaf; color, Flame.
4. 7JH bottle—113 dancer; color, White.

All floral arrangements by Mrs. Frank.